



Scan this QR code to learn more about Ford vehicles at m.ford.ca. Mobile data rates may apply.

Our commitment to you: Peace-of-Mind Protection

- Basic Coverage: 3 years/60,000 km
- Powertrain Limited Warranty: 5 years/100,000 km
- Corrosion Perforation Warranty: 5 years/unlimited distance
- Roadside Assistance: 5 years/100,000 km

Certain conditions apply. For more information on these warranties and coverages, ask your local Ford of Canada Dealer or visit ford.ca.

Ford Extended Service Plan. Help protect your investment and add to your peace of mind by complementing your vehicle purchase or lease with a Ford Extended Service Plan (ESP). Ford ESP protects you against unexpected repair costs after your Basic Coverage in the New Vehicle Limited Warranty expires by covering many vehicle components. Enjoy the drive even more by complementing your ESP with a prepaid maintenance plan, which covers all required scheduled maintenance for your vehicle, plus 8 wear items. See your Ford of Canada Dealer for details.

Ford Credit. Get the ride you want. Whether you plan to lease or finance, you'll find the choices that are right for you at Ford Credit. Ask your local Ford of Canada Dealer for details or check us out at fordcredit.ca.

Ford Original Accessories that are properly installed by the authorized Dealer that sold the accessory will be warranted for whichever provides you the greatest benefit: 24 months/unlimited distance, or the remainder of your 3-year/60,000-km New Vehicle Limited Warranty. Ford Licensed Accessories (FLA) are warranted by the accessory manufacturer's warranty. FLA are designed and developed by the accessory manufacturer and have not been designed or tested to Ford Motor Company engineering requirements. Contact your local Ford of Canada Dealer for details and/or a copy of all limited warranties.

For prompt, courteous answers to your questions: Ford Customer Relationship Centre 1-800-565-3673; Ford Credit Customer Service Centre 1-877-636-7346.

Comparisons based on competitive models (class is Small Utility), publicly available information and Ford certification data at the time of printing. Some features discussed may be optional. Vehicles shown may contain optional equipment. Features shown may be offered only in combination with other options or subject to additional ordering requirements or limitations. Dimensions shown may vary due to optional features and/or production variability. Information is provided on an "as is" basis and could include technical, typographical or other errors. Ford Motor Company of Canada, Limited, makes no warranties, representations, or guarantees of any kind, express or implied, including but not limited to, accuracy, currency, or completeness, the operation of the information, materials, content, availability, and products. Your Ford of Canada Dealer is your best source for up-to-date information. Ford Motor Company of Canada, Limited, reserves the right to change product specifications at any time without incurring obligations. Colours may not be exactly as illustrated due to restrictions of the printing process. Please see your sales consultant for specific colour and model availability.

iPhone, iPod and Siri are trademarks of Apple Inc., registered in the U.S. and other countries. "SiriusXM," the SiriusXM logo, channel names and logos are trademarks of SiriusXM Radio Inc., and are used under licence. Sony is a registered trademark of the Sony Corporation. The Bluetooth word mark is a trademark of the Bluetooth SIG, Inc. THULE is a registered trademark of Thule Sweden AB. Wi-Fi® is a registered trademark of the Wi-Fi Alliance.® All other trademarks, service marks, images and logos are property of their respective owners and are displayed in this publication with permission. All rights reserved.

Questions or comments?



blog.ford.ca



facebook.com/FordCanada



twitter.com/FordCanada



youtube.com/FordCanada



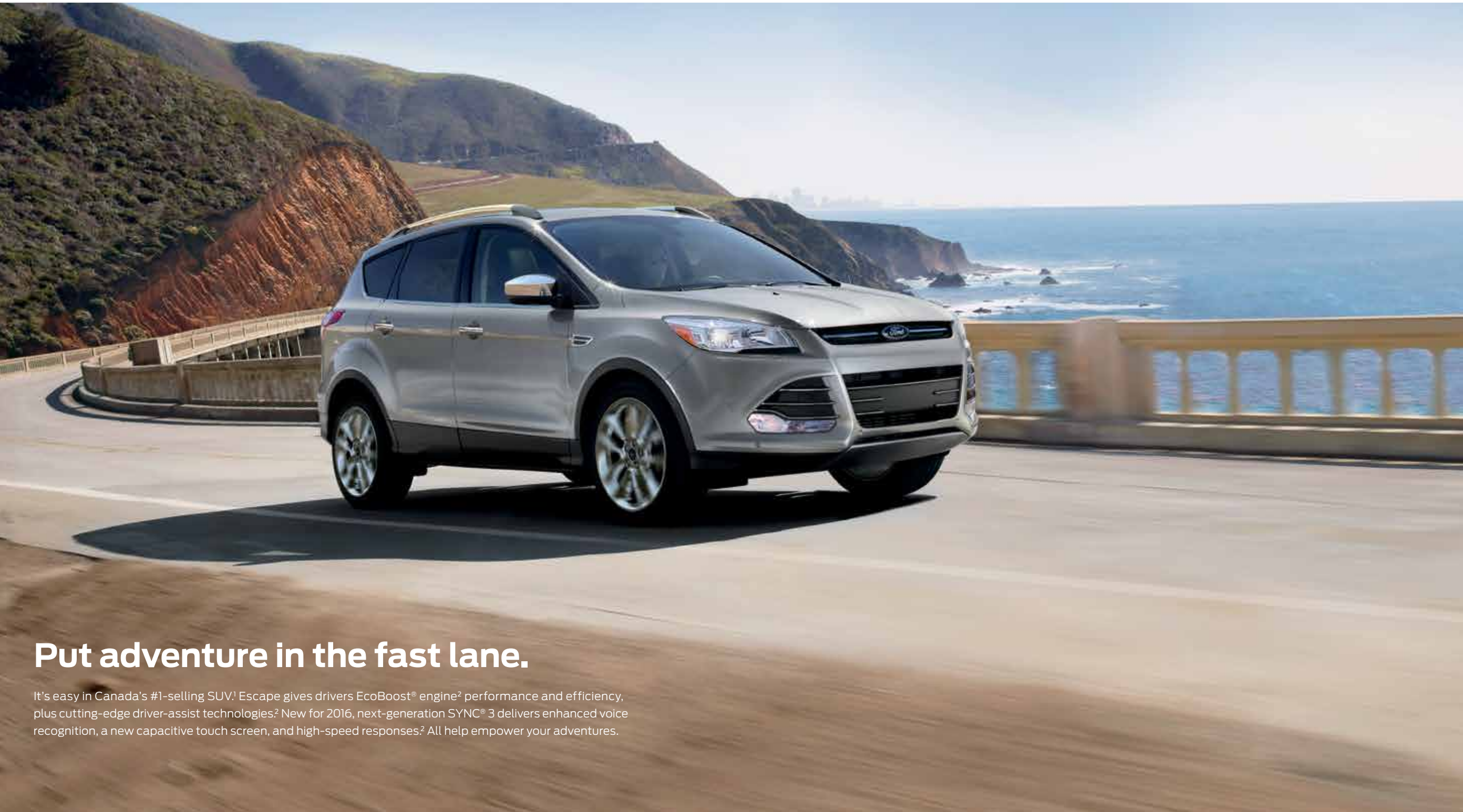
ford.ca

©2015 Ford Motor Company of Canada, Limited

2016 | ESCAPE



Go Further



Put adventure in the fast lane.

It's easy in Canada's #1-selling SUV! Escape gives drivers EcoBoost® engine² performance and efficiency, plus cutting-edge driver-assist technologies.² New for 2016, next-generation SYNC® 3 delivers enhanced voice recognition, a new capacitive touch screen, and high-speed responses.² All help empower your adventures.

SE. Ingot Silver Metallic. Chrome Package. Available equipment.

¹Based on 2007-2013 and YTD July 2014 R.L. Polk vehicle registration data for Canada in the Large Premium Utility, Large Traditional Utility, Large Utility, Medium Premium Utility, Medium Utility, Small Premium Utility, and Small Utility Segments. ²Available feature.



1.6L ECOBOOST
7.4L/100 km (38MPG) HWY¹
10.1L/100 km (28MPG) CITY¹

Go. Empowered by your choice.

The 2016 Escape offers you 3 different engines: a standard 2.5L iVCT with 168 hp and 170 lb.-ft. of torque, a 1.6L EcoBoost^{®2} and a 2.0L EcoBoost.² Each is mated to our 6-speed SelectShift[®] automatic transmission. So you can shift for yourself, or leave the fun to Escape.

In curves and corners, standard Torque Vectoring Control seamlessly enhances your hold on the road³ while electric power-assisted steering delivers responsive steering feel.

To make itself more aerodynamic and fuel efficient, Escape can adjust its Active Grille Shutters (on 2.5L and 1.6L models).

Our turbocharged, direct-injection 1.6L EcoBoost² uses twin independent variable camshaft timing to maximize fuel efficiency or power output as your input demands. It has a rating of 7.4L/100 km (38 mpg) hwy!¹ It also produces 178 hp⁴ and 184 lb.-ft.⁴ of torque for lively acceleration and passing performance.

For even more fun, step up to the 2.0L EcoBoost² with 240 hp⁴ and 270 lb.-ft.⁴ of torque. With 90% of its peak torque available from 1,750 to 4,500 rpm, the 2.0L engine helps you make the most of every drive.



Titanium. Magnetic Metallic. Available equipment.

¹1.6L EcoBoost FWD models. Fuel consumption ratings based on Government of Canada approved test methods. Actual fuel consumption will vary for all ratings. ²Available feature. ³Remember that even advanced technology cannot overcome the laws of physics. It's always possible to lose control of a vehicle due to inappropriate driver input for the conditions. ⁴Figures achieved using 93-octane fuel.



Adapt. To make the most of every day.

With a versatile interior, Escape is designed to help you live life to the fullest. Its feeling of spaciousness is amplified by a power panoramic Vista Roof.^{®1}

Up to 1,920 litres (67.8 cu. ft.) of cargo space is yours to fill with the rear seat folded down. For a flat load surface, fold the reclining¹ 60/40 split rear seat down and adjust the cargo load floor² to its highest position.

Just kick your foot under the rear bumper, with your Intelligent Access¹ key fob tucked away in a pocket or purse, to open or close the foot-activated hands-free power liftgate! Then, simply touch the door handle to enter and start Escape without using your key — thanks to push-button start! You're always ready for your next adventure.

Titanium. Electric Spice Metallic. Available equipment.

¹Available feature. ²Available with 17" wheels only.

SYNC® 3. The next generation is here.

Standard on Titanium and optional on SE, new SYNC 3 technology¹ brings enhanced next-level connectivity to Escape. In addition to all the voice-activated benefits of the base SYNC system – placing and answering calls, and controlling music from your USB or smartphone – you'll love the innovative new features and easy-to-use new interface of SYNC 3.

New hardware meets new software on the easy-to-read 8" colour LCD touch screen that displays phone, audio and navigation² functions.

High-speed performance, including a capacitive touch screen with convenient swipe and pinch-to-zoom features, means you'll experience quick responses to your touch or voice commands.

Enhanced voice recognition lets you talk with simple, real-world commands and the system responds naturally to your voice, making hands-free calling that much easier.

Siri® seamless integration brings the power of Siri Eyes Free³ and your iPhone^{®3} into your vehicle.

Automatic updates over Wi-Fi^{®4} let you keep SYNC 3 up to date with the latest software as soon as new updates become available.

SYNC. Say the word.®

Standard on SE and optional on S, Ford SYNC¹ with a 4.2" screen delivers many of the great features found on SYNC 3, including:

Hands-free calling that lets you make a call with the simple push of a button along with the sound of your voice.

Automatic phone book download that transfers the names and numbers in your compatible phone automatically, once paired.

Voice-activated music commands that let you say what music you want to hear and listen to it easily with voice-activated search, or say "Bluetooth[®] audio" to stream content from your phone.

Plug-in capability with your MP3 player, USB or iPod.®

¹Available feature. Some mobile phones and some digital media players may not be fully compatible. Driving while distracted can result in loss of vehicle control. Only use SYNC/other devices, even with voice commands, when it is safe to do so. SYNC voice recognition and screens available in English, French and Spanish. Some features may be locked out while the vehicle is in motion. ²Available feature.

³You must have a Bluetooth-enabled phone paired to your SYNC system. ⁴Optional Navigation System map updates cannot be received via Wi-Fi and require a separate update. Data rates may apply.



A new capacitive touch screen with SYNC 3 has impressive responsiveness like a smartphone's swipe feature, as well as pinch-to-zoom functionality with navigation.²

Simple music access helps you find your favourite music fast. Through intelligent voice commands, SYNC 3 can automatically switch between music sources.

Easy destination entry within navigation² helps you locate your favourite restaurants, nearest ATM, closest fuel station and more.



Nurture. Yourself and the environment.

Escape takes care of you and your front passenger with 10-way power, heated, leather-trimmed seats,¹ standard on Titanium. In the rear, ample hip room and leg room offer comfortable support.

Add the Audio System from Sony^{®1} to treat yourself and your passengers to the deep, rich sound of 10 strategically placed speakers. Then set the ambient lighting¹ to your choice of 7 hues to bring it all together.

Escape shows its respect for nature by putting several materials often destined for landfills to practical reuse. Recycled plastic bottles go into its carpeting, which is made of 100% recycled polyester fibres. Scrap cotton from denim manufacturers is turned into sound-absorption material that helps keep Escape quiet inside. Plus, the vehicle itself is approximately 85% recyclable after it's driven its last kilometre.

Listen to your favourites all across Canada with SiriusXM.^{®1} Your 6-month prepaid subscription gets you the best in audio entertainment including 100% commercial-free music from every genre, world-class news, sports, comedy and entertainment.²

Titanium. Charcoal Black leather trim. Available equipment.

¹Available feature. ²SiriusXM subscriptions sold after 6-month prepaid period expires. Subscriptions are governed by SiriusXM Customer Agreement; see siriusxm.ca.

(((SiriusXM)))

Travel. Beyond the road.

Headed out of town? Take the road less travelled with confidence in your 2016 Escape with the Intelligent 4WD System.¹ Assessing conditions about 20 times faster than the blink of an eye, this on-demand system readjusts as needed to deliver the right balance of handling and traction at all times. Whether you're challenged by a sudden downpour, loose gravel, or even a snow-packed mountain road, 4WD can help keep your adventures on track.



SE. Ingot Silver Metallic. Available equipment.

¹Available feature.

Tow. With utmost confidence.

Equipped with the 240-hp 2.0L EcoBoost® engine¹ and the Class II Trailer Tow Prep Package,¹ the 2016 Ford Escape provides the power, sure-footedness and confidence to tow up to 3,500 lbs. (1,588 kg).²

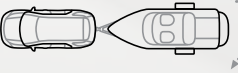
Handle it all with confidence. Trailer sway control¹ helps to monitor the motions of your vehicle to detect trailer sway. If needed, it can reduce engine speed and selectively apply the brakes to help you maintain control of both vehicle and trailer.³ Play smarter in Escape.



2.0L ECOBOOST | 270 LB.-FT.⁴ | 240 HP⁴



3,500 LBS.  MAX. TOWING²

SWAY  CONTROL¹

Titanium. Deep Impact Blue Metallic. Available equipment.
¹Available feature. ²When properly equipped. ³Remember that even advanced technology cannot overcome the laws of physics. It's always possible to lose control of a vehicle due to inappropriate driver input for the conditions. ⁴Figures achieved using 93-octane fuel.



Move. With help from Escape.

Escape driver-assist technologies¹ use ultrasonic sensors and sophisticated radar to help you with parallel parking, avoiding collisions and more.

Make parallel parking easier with active park assist!¹ This system not only helps you find a spot, it steers Escape into place while you control the gear shifter, and brake and accelerator pedals.

Stay alert to traffic detected in blind spots as you drive forward, or to traffic nearing either side of the vehicle as you slowly back up, thanks to BLIS[®] (Blind Spot Information System) with cross-traffic alert!¹ The system helps warn you using lights embedded in the sideview mirrors.²

Gauge how close something is to the back of your Escape with help from the rear view camera³ and its colour-coded distance guidelines.³ A dotted centre line also helps when lining up with a trailer.

For your convenience, active park assist and BLIS with cross-traffic alert are included in the Titanium Technology Package,¹ along with high-intensity discharge (HID) headlamps, rain-sensing windshield wipers, and a Forward Sensing System.

Driver-assist features are supplemental and do not replace the driver's attention, judgment and need to control the vehicle. ¹Available feature. ²BLIS replaces standard integrated blind spot mirrors. ³Available feature. Shown on available SYNC[®] 3 screen.



Maintain. Your peace of mind.

When it comes to your safety and security, Escape is equipped to take a proactive, personalized approach. On every ride. In a wide range of weather conditions.

Among its 7 standard airbags, the front-seat side airbags feature an adaptive tunnel vent that helps tailor them to occupant size – for personalized protection and reassuring peace of mind.

If it senses you're taking a curve too quickly, Curve Control helps reduce the vehicle's speed by as much as 16 km/h in approximately one second.¹ Effective on wet or dry pavement, this feature is particularly useful on highway ramps. As part of AdvanceTrac[®] with RSC[®] (Roll Stability Control[™]), Curve Control is standard on every 2016 Escape.



DRIVER'S KNEE AIRBAG



TIRE PRESSURE MONITORING



CURVE CONTROL¹

SE. Ruby Red Metallic Tinted Clearcoat. Chrome Package. Available equipment.

Driver-assist features are supplemental and do not replace the driver's attention, judgment and need to control the vehicle. ¹Remember that even advanced technology cannot overcome the laws of physics. It's always possible to lose control of a vehicle due to inappropriate driver input for the conditions.

Escape Specifications



Titanium. Magnetic Metallic. Available equipment.

Standard Features

Mechanical

6-speed SelectShift® automatic transmission with Sport Mode
4-wheel independent suspension
Active Grille Shutters (not available with 2.0L EcoBoost® engine)
Electric power-assisted steering
Front and rear stabilizer bar
Front-wheel drive (FWD models only)
Intelligent 4WD System (4WD models only)
Mini spare wheel and tire
Power disc brakes with Anti-Lock Brake System (ABS)
Torque Vectoring Control

Seating

Front bucket seats
Front-passenger seat back map pocket
Rear 60/40 split-fold bench seat with tip-fold-flat latch and reclining seat backs

Interior

12-volt powerpoints (4)
Adjustable driver and front-passenger sun visors with covered vanity mirrors
Air conditioning with particulate air filter
Cargo floor hooks (4)
Coat hooks (2)
Front (2) and rear (2) assist handles
Front and rear carpeted floor mats
Front and rear dome lights with front map lights and rear cargo area light

Front-row centre console with 2 cupholders, storage and armrest
Illuminated Entry System
Manual tilt/telescoping steering column
Message centre
Overhead console with sunglasses holder
Power door locks
Power windows with one-touch-down driver's side window feature
Seat-side storage trays for driver and front passenger
Steering wheel-mounted cruise and audio controls
Tachometer
Trip computer

Exterior

Automatic headlamps
Body-colour front and rear fascias
Body-colour rear spoiler
Easy Fuel® capless fuel filler
Heated front wiper park
Power sideview mirrors with integrated blind spot mirrors and manual fold-away design
Privacy glass (rear doors, rear quarter windows and liftgate window)
Rear-window defroster
Solar-tinted glass
Windshield wipers – Front: variable-intermittent with washer; rear: 2-speed with washer

Safety & Security

3-point safety belt restraint system for all seating positions
Adjustable head restraints at all 5 seating positions
AdvanceTrac® with RSC® (Roll Stability Control™) and Curve Control
Battery saver
Belt-Minder™ front safety belt reminder
Child-safety rear door locks
Driver's knee airbag ¹
Front height-adjustable shoulder safety belts
Front-seat side airbags ¹
LATCH – Lower Anchors and Tether Anchors for Children (rear outboard seating positions)
MyKey®
Personal Safety System™ for driver and front passenger includes dual-stage front airbags ¹ ; safety belt pretensioners, safety belt energy-management retractors, safety belt usage sensors, driver's seat position sensor, crash severity sensor, restraint control module and Front-Passenger Sensing System
Safety Canopy® System with side-curtain airbags ¹ and rollover sensor
SecuriLock® Passive Anti-Theft Engine Immobilizer System
SOS Post-Crash Alert System™
Tire Pressure Monitoring System (excludes spare)

Estimated Fuel Consumption Ratings² and Dimensions

2.5L iVCT 4-cylinder

168 hp @ 6,000 rpm
170 lb.-ft. of torque @ 4,500 rpm
6-speed SelectShift automatic
FWD 10.9L/100 km city and 7.6L/100 km hwy (26 mpg city/37 hwy)

1.6L EcoBoost 4-cylinder

178 hp @ 5,700 rpm ³
184 lb.-ft. of torque @ 2,500 rpm ³
6-speed SelectShift automatic
FWD 10.1L/100 km city and 7.4L/100 km hwy (28 mpg city/38 hwy)
AWD 10.5L/100 km city and 7.9L/100 km hwy (27 mpg city/36 hwy)

2.0L EcoBoost 4-cylinder

240 hp @ 5,500 rpm ³
270 lb.-ft. of torque @ 3,000 rpm ³
6-speed SelectShift automatic
FWD 10.9L/100 km city and 7.9L/100 km hwy (26 mpg city/36 hwy)
AWD 11.4L/100 km city and 8.4L/100 km hwy (25 mpg city/34 hwy)

Exterior mm (in.)

Wheelbase	2,690 (105.9)
Length	4,524 (178.1)
Height	1,684 (66.3)
Width – Excluding mirrors	1,839 (72.4)
Width – Including mirrors	2,078 (81.8)
Width – Mirrors folded	1,905 (75.0)
Liftover height	706 (27.8)

Interior mm (in.)

	Front/Rear
Head room	1,013 (39.9)/991 (39.0)
Shoulder room	1,422 (56.0)/1,405 (55.3)
Hip room	1,392 (54.8)/1,331 (52.4)
Leg room	1,095 (43.1)/935 (36.8)

Capacities litres (cu. ft.)

Passenger volume	2,778 (98.1)
Cargo volume behind front seats	1,920 (67.8)
Cargo volume behind rear seats	971 (34.3)
Fuel capacity (litres)	57
Max. towing lbs. (kg) ⁴	3,500 (1,588)

Dimensions may vary by trim level. ¹Always wear your safety belt and secure children in the rear seat. ²Fuel consumption ratings based on Government of Canada approved test methods. Actual fuel consumption will vary for all ratings. ³Figures achieved using 93-octane fuel. ⁴When properly equipped.

S

FWD or 4WD
Equipment Group 100A
Includes all standard features, plus:

Mechanical

2.5L iVCT 4-cylinder engine (FWD only)
1.6L EcoBoost® 4-cylinder engine (4WD only)

Seating

6-way manual driver's seat and 4-way manual front-passenger seat
Cloth seats

Interior

AM/FM stereo/single-CD player with MP3 capability and 6 speakers
Cupholders (4)

Exterior

17" steel wheels with Sparkle Silver-painted wheel covers and P235/55R17 all-season BSW tires
Black door handles, upper and lower grilles and sideview mirrors
Dual bright exhaust tips (4WD only)
Quad-beam halogen headlamps
Remote Keyless Entry System with integrated key transmitter remotes (2)
Silver-painted rear skid plate (4WD only)

Available Equipment Group

Equipment Group 101A – Ford SYNC® Enhanced Voice Recognition Communications and Entertainment System which includes 4.2" colour LCD screen in centre stack, 911 Assist, AppLink™ and 1 smart-charging USB port (includes rear view camera) + 17" Sparkle Silver-painted aluminum wheels + **Cargo Utility Package** includes interior cargo cover and black roof-rack side rails

Available Options & Package

Black roof-rail crossbars (requires Cargo Utility Package)
Cargo mat

Cargo Utility Package includes interior cargo cover and black roof-rack side rails (100A only)

Engine block heater (FWD only; included on 4WD models)

Front and rear all-weather floor mats

SYNC Enhanced Voice Recognition Communications and Entertainment System which includes 4.2" colour LCD screen in centre stack, 911 Assist, AppLink and 1 smart-charging USB port (includes rear view camera) (100A only)



17" Steel with Sparkle Silver-Painted Wheel Covers
Standard: S



17" Sparkle Silver-Painted Aluminum
Available: S; Standard: SE



18" Chrome Alloy Finish
Available: SE



19" Chrome-Like Alloy Finish
Included:
Chrome Package on SE

SE

FWD or 4WD
Equipment Group 200A
Includes select S features, plus:

Mechanical

1.6L EcoBoost 4-cylinder engine
Engine block heater

Seating

Driver's seat back map pocket
Heated front bucket seats
Rear seat with centre armrest
Unique cloth seats

Interior

110-volt power outlet
Acoustic-laminate front-door glass
Chrome finish on door handles
Compass and outside temperature displays
Cupholders (8)
Illuminated visor vanity mirrors
Rear view camera
SiriusXM® with 6-month prepaid subscription
SYNC Enhanced Voice Recognition Communications and Entertainment System which includes 4.2" colour LCD screen in centre stack, 911 Assist, AppLink and 1 smart-charging USB port

Exterior

17" Sparkle Silver-painted aluminum wheels
Black upper grille with chrome bar
Body-colour door handles
Body-colour, heated sideview mirrors
Chrome beltline mouldings
Dual bright exhaust tips
Fog lamps
SecuriCode™ invisible keypad
Silver-painted front and rear skid plates

Available Equipment Group

Equipment Group 201A – 10-way power driver's seat + interior cargo cover + **Convenience Package** includes SYNC 3 Enhanced Voice Recognition Communications and Entertainment System (8" colour LCD touch screen in centre stack with swiping and pinch-to-zoom capabilities, 911 Assist, AppLink and 2 smart-charging USB ports), dual-zone electronic automatic temperature control, 9 speakers, black roof-rack side rails, Reverse Sensing System, and perimeter alarm

Available Options & Packages

2.0L EcoBoost 4-cylinder engine

2.5L iVCT 4-cylinder engine (200A FWD only)

18" chrome alloy finish wheels with P235/50R18 all-season BSW tires (requires 201A)

Black roof-rail crossbars (requires Cargo Utility Package or 201A)

Cargo mat

Cargo Utility Package includes interior cargo cover and black roof-rack side rails (200A only)

Chrome Package includes chrome door handles, chrome liftgate appliqué, chrome sideview mirror caps, chrome roof-rack side rails, chrome accents on lower grille, partial leather-trimmed seats, and 19" chrome-like alloy finish wheels (requires 201A; n/a with Leather Comfort Package)

Class II Trailer Tow Prep Package includes trailer sway control (2.0L EcoBoost only)

Front and rear all-weather floor mats

Leather Comfort Package includes leather-trimmed seats, power windows with one-touch -up/-down feature, and leather-wrapped steering wheel and shift knob (requires 201A; n/a with Chrome Package)

Power liftgate (requires 201A)

Power panoramic Vista Roof® (requires 201A)

Voice-activated Navigation System (requires 201A)

S & SE



SE. Medium Light Stone cloth trim.

SE. 60/40 split-fold rear seat with reclining seat backs.

SE. Chrome Package.¹ Partial leather-trimmed seats.

MyKey.[®]

¹Available feature.

Titanium



White Platinum Metallic Tri-coat. 19" Luster Nickel-painted aluminum wheels.¹ Available equipment.

Charcoal Black leather trim. Ambient lighting. Available equipment.

60/40 split rear seat.

110-volt power outlet.

High-intensity discharge (HID) headlamps.¹

¹Available feature.

FWD or 4WD
Equipment Group 300A
Includes select SE features, plus:

Mechanical

2.0L EcoBoost® 4-cylinder engine

Seating

10-way power, heated front bucket seats with driver's side memory feature

Leather-trimmed seats

Interior

Ambient lighting

Audio System from Sony® with 10 speakers

Auto-dimming rearview mirror

Dual-zone electronic automatic temperature control

High-gloss Black finish on centre stack and window switch bezels

Intelligent Access with push-button start

Interior cargo cover

Leather-wrapped steering wheel and shift knob

Power windows with one-touch-up/-down feature

SYNC® 3 Enhanced Voice Recognition Communications and Entertainment System which includes 8" colour LCD touch screen in centre stack with swiping and pinch-to-zoom capabilities, 911 Assist,® AppLink™ and 2 smart-charging USB ports

Universal garage door opener

Exterior

18" Sparkle Nickel-painted aluminum wheels with P235/50R18 all-season BSW tires

Body-colour, heated sideview mirrors with turn signal indicators, security approach lamps and driver's side memory

Chrome liftgate appliqué

Foot-activated hands-free power liftgate

Gloss Black upper grille with chrome bar and surround

Gloss Black lower grille

Perimeter alarm

Remote Start System

Reverse Sensing System

Silver-painted roof-rack side rails

Available Equipment Group

Equipment Group 301A – Titanium Technology Package includes high-intensity discharge (HID) headlamps, BLIS® (Blind Spot Information System) with cross-traffic alert, rain-sensing windshield wipers, Forward Sensing System, and active park assist

Available Options & Packages

19" Luster Nickel-painted aluminum wheels with P235/45R19 all-season BSW tires

Black roof-rail crossbars

Canadian Touring Package includes power panoramic Vista Roof® and voice-activated Navigation System

Cargo mat

Class II Trailer Tow Prep Package includes trailer sway control

Front and rear all-weather floor mats

Power panoramic Vista Roof

Premium partial leather-trimmed sport-style seats

Voice-activated Navigation System



18" Sparkle Nickel-Painted Aluminum Standard



19" Luster Nickel-Painted Aluminum Optional

Exteriors This helpful guide is intended for selecting an exterior colour – not features, options or a trim level.



White Platinum Metallic Tri-coat



Oxford White



Ingot Silver Metallic



Ruby Red Metallic Tinted Clearcoat



Sunset Metallic



Deep Impact Blue Metallic



Electric Spice Metallic

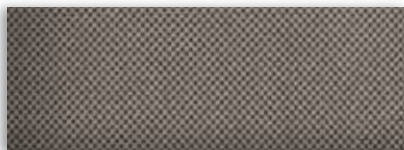


Magnetic Metallic

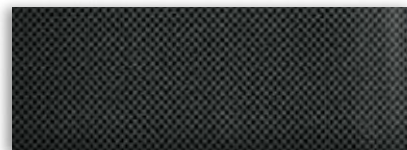


Shadow Black

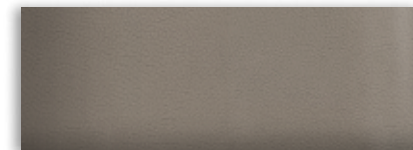
Interiors



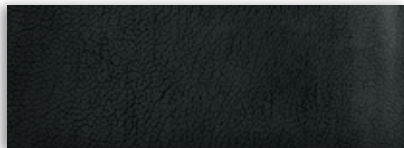
1 Medium Light Stone Cloth



2 Charcoal Black Cloth



3 Medium Light Stone Leather



4 Charcoal Black Leather



5 Charcoal Black Partial Leather

Exteriors	S	Interiors							
		SE					Titanium		
White Platinum Metallic Tri-coat ¹		1	2	3	4	5	3	4	5
Oxford White	2	1	2	3	4	5			
Ingot Silver Metallic	2	1	2	3	4	5	3	4	5
Ruby Red Metallic Tinted Clearcoat ¹		1	2	3	4	5	3	4	5
Sunset Metallic	2	1	2	3	4	5	3	4	5
Deep Impact Blue Metallic	2	1	2	3	4	5	3	4	5
Electric Spice Metallic	2	1	2	3	4	5	3	4	5
Magnetic Metallic	2	1	2	3	4	5	3	4	5
Shadow Black	2	1	2	3	4	5	3	4	5

^{3, 4} Requires Leather Comfort Package on SE

⁵ Requires Chrome Package on SE; optional on Titanium

Colours are representative only. See your Ford of Canada Dealer for actual paint/trim options.

¹Additional charge.



SE in Ingot Silver Metallic accessorized with roof side rails and crossbars, Aeroskin hood protector by Lund,² side window deflectors, moulded splash guards, and roof-mounted bike carriers by THULE²

Remote start systems

All-weather floor mats

Interior cargo cover and cargo area protector

Rear spoiler winglets



Exterior

Full vehicle cover²

Hood protector²

Racks and carriers²

Rear spoiler winglets

Roof side rails and crossbars

Side window deflectors

Splash guards

Sportz[®] tent²

Trailer towing accessories

Wheel lock kit



Interior

All-weather and carpeted floor mats

Ash cup/coin holders

Cargo organizers and protectors

Door sill plates

Interior cargo cover

Interior light kit

Protective seat covers²

Tablet cradle²



Electronics

Keyless entry keypad

Remote Access

Remote start systems

Warning Sensor System²

²Ford Licensed Accessory.



FORD ACCESSORIES