



Scan this QR code to learn more about Ford vehicles at m.ford.ca. Mobile data rates may apply.

Our commitment to you: Peace-of-Mind Protection

- Basic Coverage: 3 years/60,000 km
- Powertrain Limited Warranty: 5 years/100,000 km
- Corrosion Perforation Warranty: 5 years/unlimited distance
- Roadside Assistance: 5 years/100,000 km

Certain conditions apply. For more information on these warranties and coverages, ask your local Ford of Canada Dealer or visit ford.ca.

Ford Extended Service Plan. Help protect your investment and add to your peace of mind by complementing your vehicle purchase or lease with a Ford Extended Service Plan (ESP). Ford ESP protects you against unexpected repair costs after your Basic Coverage in the New Vehicle Limited Warranty expires by covering many vehicle components. Enjoy the drive even more by complementing your ESP with a prepaid maintenance plan, which covers all required scheduled maintenance for your vehicle, plus 8 wear items. See your Ford of Canada Dealer for details.

Ford Credit. Get the ride you want. Whether you plan to lease or finance, you'll find the choices that are right for you at Ford Credit. Ask your local Ford of Canada Dealer for details or check us out at fordcredit.ca.

Ford Original Accessories that are properly installed by the authorized Dealer that sold the accessory will be warranted for whichever provides you the greatest benefit: 24 months/unlimited distance, or the remainder of your 3-year/60,000-km New Vehicle Limited Warranty. Ford Licensed Accessories (FLA) are warranted by the accessory manufacturer's warranty. FLA are designed and developed by the accessory manufacturer and have not been designed or tested to Ford Motor Company engineering requirements. Contact your local Ford of Canada Dealer for details and/or a copy of all limited warranties.

For prompt, courteous answers to your questions: Ford Customer Relationship Centre 1-800-565-3673; Ford Credit Customer Service Centre 1-877-636-7346.

Comparisons based on competitive models (class is Subcompact Cars), publicly available information and Ford certification data at the time of printing. Some features discussed may be optional. Vehicles shown may contain optional equipment. Features shown may be offered only in combination with other options or subject to additional ordering requirements or limitations. Dimensions shown may vary due to optional features and/or production variability. Information is provided on an "as is" basis and could include technical, typographical or other errors. Ford Motor Company of Canada, Limited, makes no warranties, representations, or guarantees of any kind, express or implied, including but not limited to, accuracy, currency, or completeness, the operation of the information, materials, content, availability, and products. Your Ford of Canada Dealer is your best source for up-to-date information. Ford Motor Company of Canada, Limited, reserves the right to change product specifications at any time without incurring obligations. Colours may not be exactly as illustrated due to restrictions of the printing process. Please see your sales consultant for specific colour and model availability.

iPhone, iPod and Siri are trademarks of Apple Inc., registered in the U.S. and other countries. KICKER is a registered trademark of Stillwater Designs and Audio, Inc. RECARO is a registered trademark of RECARO Beteteiligungs-GmbH. "SiriusXM," the SiriusXM logo, channel names and logos are trademarks of SiriusXM Radio Inc. and are used under licence. Sony is a registered trademark of the Sony Corporation. The Bluetooth word mark is a trademark of the Bluetooth SIG, Inc. Wi-Fi® is a registered trademark of the Wi-Fi Alliance.® All other trademarks, service marks, images and logos are property of their respective owners and are displayed in this publication with permission. All rights reserved.

Questions or comments?



blog.ford.ca



facebook.com/FordCanada



twitter.com/FordCanada



youtube.com/FordCanada



ford.ca

©2015 Ford Motor Company of Canada, Limited

2016 | **FIESTA+ST**



Go Further

Efficiency experts, applaud now.

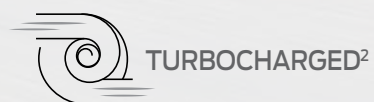
We all want to get the most energy we can from a litre of gas. That's why starting with an efficient foundation is key. Enter Ford Fiesta.

Fiesta has a rating of 5.5L/100 km (51 mpg) hwy¹ when equipped with the SE Manual EcoBoost[®] Package. Along with a rear spoiler on sedan models, it includes a 1.0L EcoBoost engine² that combines direct fuel injection, turbocharging and twin independent variable camshaft timing.

With an impressive 123 horsepower and 125 lb.-ft. of torque, the 1.0L EcoBoost isn't shy about performance. With a single turbocharger that's right-sized for power and efficiency, plus an "overboost" feature that can extend peak torque, it pulls with authority when power is needed most: when entering the highway or passing slower-moving traffic. More proof that big ideas come in unexpected packages. Just like the 2016 Ford Fiesta.



5.5 L/100 km (**51**MPG) HWY¹
7.5 L/100 km (**38**MPG) CITY¹



SE Sedan. SE Manual EcoBoost Package. Ruby Red Metallic Tinted Clearcoat. Available equipment.

¹1.0L EcoBoost. Fuel consumption ratings based on Government of Canada approved test methods. Actual fuel consumption will vary. ²Available feature.



Performance enthusiasts, take your seat.

The driver's seat, of course. Then place your hand on the leather-wrapped shift knob of the 6-speed manual transmission. That's paired with a turbocharged 1.6L EcoBoost® engine with a class-best¹ 197 horsepower² and 202 lb.-ft. of torque.² Hit the street – Fiesta ST style.

Extend peak torque for up to 17 seconds with a unique “overboost” feature on EcoBoost. A sport-suspension architecture with European-inspired tuning and 17” summer performance tires³ helps you stay planted.

Firmly gripped by the supportive bolsters of the RECARO® partial leather-trimmed seats, you'll enjoy the amplified engine sounds from EcoBoost that are piped into the cabin through the sound symposer. Or the resounding boom of the 8-speaker Audio System from Sony.® To stay connected, standard new SYNC® 3 makes it easy to control your phone, entertainment and turn-by-turn navigation⁴ by voice, or by a touch⁵ of the 6.5" colour LCD touch screen. Behind the wheel of Fiesta ST, the rush is always on.

ST. Molten Orange Metallic Tri-coat. Available equipment.

¹Class is High Performance Subcompact Manual Cars. ²Figures achieved using 93-octane fuel. ³Ford does not recommend using summer tires when temperatures drop to approximately 7°C or below (depending on tire wear and environmental conditions) or in snow/ice conditions. If the vehicle must be driven in these conditions, Ford recommends using all-season or winter tires. ⁴Available feature. ⁵Some features may be locked out while the vehicle is in motion.



Drivers, keep smiling.

In Fiesta, every drive brings a grin. Take advantage of that open straightaway. Enjoy every curve. And draw admiring glances along the way.

To help Fiesta stay sure-footed in the corners, standard Torque Vectoring Control¹ applies slight braking force (as needed) to the inside front wheel to help more torque reach the road.

For that extra-connected feel, the PowerShift 6-speed automatic transmission² helps provide torque to the front wheels 100% of the time during shifts. Electric power-assisted steering improves steering feel at low speeds and provides precise assistance on the highway. Specially tuned shocks and spring rates balance responsive handling with the need for a smooth ride. Choose your favourite 15" or 16" wheels.² Then go.

¹Remember that even advanced technology cannot overcome the laws of physics. It's always possible to lose control of a vehicle due to inappropriate driver input for the conditions. ²Available feature.



SYNC® 3. The next generation is here.

Standard on Titanium and ST and optional on SE, new SYNC 3 technology^{1,2} brings enhanced next-level connectivity to Fiesta. In addition to all the voice-activated benefits of the standard SYNC system – placing and answering calls, and controlling music from your USB or smartphone – you'll love the innovative new features and easy-to-use new interface of SYNC 3.

New hardware meets new software on the easy-to-read 6.5" colour LCD touch screen that displays phone, audio and navigation¹ functions.

High-speed performance, including a capacitive touch screen with a convenient swipe feature, means you'll experience quick responses to your touch or voice commands.

Enhanced voice recognition lets you talk with simple, real-world commands and the system responds naturally to your voice, making hands-free calling that much easier.

Siri® seamless integration brings the power of Siri Eyes Free³ and your iPhone®³ into your vehicle.

Automatic updates over Wi-Fi®⁴ let you keep SYNC 3 up to date with the latest software as new updates become available.

SYNC. Say the word.™

Standard on S and SE, Ford SYNC² with a 4.2" screen delivers many of the great features found on SYNC 3, including:

Hands-free calling that lets you make a call with the simple push of a button along with the sound of your voice.

Automatic phone book download that transfers the names and numbers in your compatible phone automatically, once paired.

Voice-activated music commands that lets you say what music you want to hear and listen to it easily with voice-activated search, or say "Bluetooth® audio" to stream content from your phone.

Plug-in capability with your MP3 player, USB or iPod.®

¹Available feature. ²Some mobile phones and some digital media players may not be fully compatible. Driving while distracted can result in loss of vehicle control. Only use SYNC/other devices, even with voice commands, when it is safe to do so. SYNC voice recognition and screens available in English, French and Spanish. Some features may be locked out while the vehicle is in motion. ³You must have a Bluetooth-enabled phone paired to your SYNC system. ⁴Optional Navigation System map updates cannot be received via Wi-Fi and require a separate update. Data rates may apply.



A new capacitive touch screen with SYNC 3 has impressive responsiveness like a smartphone's swipe feature, as well as pinch-to-zoom functionality within navigation.¹

Simple music access helps you find your favourite music fast. Through intelligent voice commands, SYNC 3 can automatically switch between music sources.

Easy destination entry within navigation¹ helps you locate your favourite restaurants, nearest ATM, closest fuel station and more.



Visitors, stay awhile.

Pull up in Fiesta and people will notice. They'll be even more impressed when they climb in.

Enter and start Fiesta – without using a key. With its Intelligent Access key fob¹ in your pocket, just touch the door handle and you're in. Then, press the brake pedal and push the start button. Keep your paired smartphone close (and charging) in the full centre console.¹

Heat your front seats,¹ in cloth or leather trim.¹ Sport-bolstered,¹ they provide plenty of comfortable support.

Crank it up with the 8 speakers of the Audio System from Sony.^{®1} Choose your colour with ambient lighting.¹ In the rear, a standard 60/40 split rear seat folds down, opening up additional cargo room.

Listen to your favourites all across Canada with SiriusXM.[®] Your 6-month prepaid subscription gets you the best in audio entertainment including 100% commercial-free music from every genre, world-class news, sports, comedy and entertainment.²

(((SiriusXM)))



Titanium. Charcoal Black leather trim. Available equipment.

¹Available feature. ²SiriusXM subscriptions sold after 6-month prepaid period expires. Subscriptions are governed by SiriusXM Customer Agreement; see siriusxm.ca.

Safety, for all.

Travel with confidence knowing that strength surrounds you in the 2016 Ford Fiesta.

A rigid safety cage underneath the aerodynamic shape of Fiesta, made of high-strength and ultra-high-strength boron steel, works with SPACE (Side Protection And Cabin Enhancement) Architecture to help divert crash forces away from occupants.

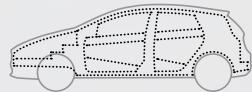
7 standard airbags include driver and front-passenger in the Personal Safety System,TM driver's knee, front-seat side, and side curtains that deploy to cover both rows of the vehicle. Underpinning it all, AdvanceTrac[®] ESC (electronic stability control) automatically helps avoid skidding and fishtailing in snowy, wet or inclement weather, helping keep all 4 wheels firmly planted.¹



DRIVER'S KNEE AIRBAG



RIGID SAFETY CAGE



BLIND SPOT MIRRORS



SE. Ruby Red Metallic Tinted Clearcoat. SE Body Kit Option. Available equipment.

¹Remember that advanced technology cannot overcome the laws of physics. It's always possible to lose control of a vehicle due to inappropriate driver input for the conditions.

Fiesta Specifications



SE, Electric Spice Metallic. SE Black Package. Body Kit Option. Available equipment.

Standard Features

Mechanical

Anti-Lock Brake System (ABS)
Electric power-assisted steering (EPAS)
Front-wheel drive (FWD)
Suspension – Front: independent MacPherson strut
Suspension – Rear: non-independent twist-beam
Torque Vectoring Control

Seating

60/40 split-fold rear seat

Interior

12-volt front powerpoint
Air conditioning
Autolock
Bottle/cupholders (5 front, 1 rear)
Front carpeted floor mats
Front doors with map pockets
Power door locks
Rear vents
Tilt/telescoping steering column

Exterior

Acoustic-laminate windshield
Body-colour door handles
Easy Fuel® capless fuel filler
Quad-beam halogen headlamps
Rear-window defroster
Rear-window wiper with washer (hatchback)
Solar-tinted glass
Windshield wipers – Front: intermittent

Safety & Security

Personal Safety System™ for driver and front passenger includes dual-stage front airbags ¹ , safety belt pretensioners, safety belt energy-management retractors, safety belt usage sensors, driver's seat position sensor, crash severity sensor, restraint control module and Front-Passenger Sensing System
AdvanceTrac® ESC (electronic stability control)
Belt-Minder™ front safety belt reminder
Child-safety rear door locks
Driver's knee airbag ¹
Front-seat side airbags ¹
Hill Launch Assist
Perimeter alarm
Remote Keyless Entry System with integrated key transmitter remotes (2)
SecuriLock® Passive Anti-Theft Engine Immobilizer System
Side-curtain airbags ¹
SOS Post-Crash Alert System™
Tire Pressure Monitoring System (excludes spare)

Estimated Fuel Consumption Ratings² and Dimensions

1.6L Ti-VCT 4-cylinder engine

120 hp @ 6,350 rpm
112 lb.-ft. of torque @ 5,000 rpm
5-speed manual
8.5L/100 km city and 6.5L/100 km hwy (33 mpg city/43 hwy)
PowerShift 6-speed automatic
8.7L/100 km city and 6.4L/100 km hwy (32 mpg city/44 hwy)

1.0L EcoBoost® 3-cylinder engine

123 hp @ 6,000 rpm
125 lb.-ft. of torque @ 2,500 rpm
5-speed manual
7.5L/100 km city and 5.5L/100 km hwy (38 mpg city/51 hwy)

1.6L EcoBoost 4-cylinder engine

197 hp @ 6,000 rpm ³
202 lb.-ft. of torque @ 4,200 rpm ³
6-speed manual
9.0L/100 km city and 7.1L/100 km hwy (31 mpg city/40 hwy)

Exterior mm (in.)	Sedan/Hatchback/ST
Wheelbase	2,489 (98.0)
Length	4,406 (173.5)/4,056 (159.7)/4,067 (160.1)
Height	1,475 (58.1)/1,476 (58.1)/1,454 (57.2)
Width – Excluding mirrors	1,722 (67.8)
Width – Including mirrors	1,977 (77.8)

Interior mm (in.)	Sedan/Hatchback/ST
Front head room	994 (39.1)
Front shoulder room	1,338 (52.7)
Front leg room	1,107 (43.6)
Rear head room	943 (37.1)/945 (37.2)/945 (37.2)
Rear shoulder room	1,244 (49.0)
Rear leg room	793 (31.2)

Capacities litres (cu. ft.)	Sedan/Hatchback/ST
Seating	5
Passenger volume	2,113 (83.2)/2,116 (83.3)/2,116 (83.3)
Luggage volume	363 (12.8)/–/–
Cargo volume behind front seats	–/720 (25.4)/720 (25.4)
Cargo volume behind rear seats	–/423 (14.9)/285 (10.1)
Fuel capacity (litres)	47

Dimensions may vary by trim level. ¹Always wear your safety belt and secure children in the rear seat. ²Fuel consumption ratings based on Government of Canada approved test methods. Actual fuel consumption will vary for all ratings. ³Figures achieved using 93-octane fuel.

S Sedan/Hatchback

Equipment Group 100A

Includes all standard features, plus:

Mechanical

1.6L Ti-VCT 4-cylinder engine

5-speed manual transmission

Compact spare steel wheel and tire

Power front disc/rear drum brakes

Seating

6-way manual driver's seat

4-way manual front-passenger seat

Adjustable front and rear head restraints

Cloth seats

Interior

3-spoke steering wheel

AM/FM stereo/single-CD player with MP3 capability, 6 speakers and 80 watts

Auxiliary audio input jack

Day/night rearview mirror

Driver and front-passenger sun visors with vanity mirrors

Ford SYNC® voice-activated, in-vehicle connectivity system with USB port

Front-passenger seat back map pocket

Manual air conditioning

Manual windows

Multifunctional digital display in centre stack

Steering wheel-mounted audio controls

Exterior

15" steel wheels with silver-painted covers and P185/60R15 tires

Black grille with chrome bars and surround

Body-colour power sideview mirrors with integrated blind spot mirrors

Liftgate spoiler (hatchback)

Available Options & Packages

Audio upgrade by KICKER® (sedan only)

Cargo Management Package includes cargo net and foldable, soft cargo organizer

Engine block heater

Exterior Protection Package includes rear bumper protector, and moulded splash guards for front and rear (hatchback only)

Fiesta Lower Door Stripe Graphic Package

Keyless entry keypad

SE Sedan/Hatchback

Equipment Group 200A

Includes select S features, plus:

Seating

Unique cloth seats and door inserts

Interior

12-volt rear powerpoint

Ambient lighting

Chrome door handles

Cruise control

Full centre console with armrest

Leather-wrapped steering wheel

Message centre with trip computer

MyKey®

Overhead console

Power windows with one-touch-up/-down

driver's side window feature

Rear dome light

Exterior

15" Sparkle Silver aluminum wheels

Automatic headlamps with wiper activation

Power sideview mirrors with integrated blind spot mirrors and turn signal indicators

Available Equipment Group

Equipment Group 201A – SE Sport Appearance Package includes SYNC 3 Enhanced Voice Recognition Communications and Entertainment System with 6.5" colour LCD touch screen in centre stack, AppLink™ 911 Assist®, and 2 smart-charging USB ports; SiriusXM® with 6-month prepaid subscription; unique Sport cloth seats; driver's seat manual lumbar; leather-wrapped shift knob; 16" 8-spoke Sparkle Silver-painted aluminum wheels; fog lamps with chrome bezels; rear decklid spoiler (sedan only); and compact spare aluminum wheel

Available Options & Packages

16" 8-spoke Black-painted machined aluminum wheels (sedan only; n/a with SE Manual EcoBoost® Package)

Audio upgrade by KICKER (sedan only)

Cargo Management Package includes cargo net and foldable, soft cargo organizer

Comfort Package includes electronic automatic temperature control, heated front seats and heated sideview mirrors

Engine block heater (n/a with SE Manual EcoBoost Package)

Exterior Protection Package includes rear bumper protector, and moulded splash guards for front and rear (hatchback only; n/a with SE Body Kit Option)

Fiesta Lower Door Stripe Graphic Package

Interior Protection Package includes all-weather floor mats (front and rear, Ebony-coloured), and cargo area protector

Keyless entry keypad

Power moonroof

PowerShift 6-speed automatic transmission with SelectShift® capability

Remote Start System (requires PowerShift 6-speed automatic transmission)

SE Black Package includes 16" 8-spoke Black-painted machined aluminum wheels; Black-painted sideview mirror caps, upper grille surround and fog lamp bezels; and unique painted grille (hatchback only)

SE Body Kit Option includes unique body-colour front fascia with black centre airfoil, body-colour rear lower valance with unique black rear diffuser, body-colour painted side rocker mouldings, and front fog lamps (hatchback only; n/a with SE Manual EcoBoost Package)

SE Manual EcoBoost Package includes 1.0L EcoBoost 3-cylinder engine, 15" steel wheels with silver-painted covers, and decklid spoiler on sedan (requires 5-speed manual transmission; n/a with 201A or engine block heater)

Voice-activated Navigation System (requires 201A)



SE Sedan. Shadow Black. SE Hatchback. Ruby Red Metallic Tinted Clearcoat. Available equipment.

Heated sideview mirrors!¹

Steering wheel-mounted audio controls!¹

SYNC voice-activated, in-vehicle connectivity system.



15" Steel with Silver-Painted Covers
Standard: S
Included: SE Manual EcoBoost Package



15" Sparkle Silver Aluminum
Standard: SE



16" 8-Spoke Sparkle Silver-Painted Aluminum
Included: SE Sport Appearance Package



16" 8-Spoke Black-Painted Machined Aluminum
Optional: SE
Included: SE Black Package

¹Available feature.

Titanium Sedan/Hatchback



Equipment Group 300A
Includes select SE features, plus:

Seating

- Adjustable lumbar support for driver's seat
- Heated front seats
- Leather-trimmed seats

Interior

- Audio System from Sony® with 8 speakers
- Auto-dimming rearview mirror
- Chrome shifter bezel (automatic)
- Electronic automatic temperature control
- Intelligent Access with push-button start
- Leather-wrapped steering wheel and shift knob
- Outside temperature display
- Rear view camera
- SiriusXM® with 6-month prepaid subscription
- SYNC® 3 Enhanced Voice Recognition Communications and Entertainment System with 6.5" colour LCD touch screen in centre stack, AppLink™, 911 Assist®, and 2 smart-charging USB ports

Exterior

- 16" premium Luster Nickel-painted aluminum wheels with P195/50R16 tires
- Chrome beltline and rear mouldings
- Fog lamps with chrome surrounds
- Heated sideview mirrors
- Piano Black-painted lower grille with chrome accent
- Reverse Sensing System

Available Options & Packages

Audio upgrade by KICKER® (sedan only)

Cargo Management Package includes cargo net and foldable, soft cargo organizer

Engine block heater

Exterior Protection Package includes rear bumper protector, and moulded splash guards for front and rear (hatchback only)

Fiesta Lower Door Stripe Graphic Package

Interior Protection Package includes all-weather floor mats (front and rear, Ebony-coloured), and cargo area protector

Power moonroof

PowerShift 6-speed automatic transmission with SelectShift® capability

Remote Start System (requires PowerShift 6-speed automatic transmission)

Voice-activated Navigation System



Sedan. Magnetic Metallic. Hatchback. Blue Candy Metallic Tinted Clearcoat. Available equipment.

Ambient lighting. Charcoal Black leather trim.

Rear view camera.

Power moonroof.¹ Medium Light Stone leather trim.

¹Available feature.



16" Premium Luster Nickel-Painted Aluminum Standard

ST Hatchback

Equipment Group 400A

Includes select SE features, plus:

Mechanical

- 1.6L EcoBoost® 4-cylinder engine with overboost
- 3-mode AdvanceTrac® ESC (electronic stability control) (Standard, Sport, Off)
- 6-speed manual transmission
- Engine block heater
- Full-size spare (15" x 6")
- Power front and rear disc brakes with performance low-metallic compound brake pads
- Unique ST sport suspension

Seating

- 6-way manual driver and front-passenger seats
- Adjustable lumbar support for driver's seat
- Heated front seats
- RECARO® partial leather-trimmed front bucket seats with cloth inserts

Interior

- Aluminum sport pedal covers
- Audio System from Sony® with 8 speakers
- Carpeted front and rear floor mats
- Electronic automatic temperature control
- Intelligent Access with push-button start
- Leather-wrapped shift knob with chrome insert
- SiriusXM® with 6-month prepaid subscription
- Sound symposer
- SYNC® 3 Enhanced Voice Recognition Communications and Entertainment System with 6.5" colour LCD touch screen in centre stack, AppLink™ 911 Assist® and 2 smart-charging USB ports
- Unique front door-sill plates with ST logo
- Unique perforated leather-wrapped steering wheel with ST badge

Exterior

- 17" premium Rado Grey-painted aluminum wheels with red-painted brake calipers and P205/40R17 summer performance tires¹
- Black headlamp bezels
- Exhaust with dual chrome tips
- Fog lamps
- Heated sideview mirrors
- Modified front fascia with black centre airfoil
- Rear diffuser
- Side rocker mouldings
- Unique high-mounted liftgate spoiler

Available Options & Packages

- 17" premium Ebony Black-painted aluminum wheels
- 17" high performance all-season tires (no cost option)
- Cargo Management Package** includes cargo net and foldable soft cargo organizer
- Over-the-top stripes (n/a with power moonroof)
- Power moonroof (n/a with over-the-top stripes)
- ST Protection Package** includes cargo area protector with ST logo, all-weather floor mats with ST logo, and full vehicle cover with ST logo
- Voice-activated Navigation System



17" Premium Rado Grey-Painted Aluminum Standard



17" Premium Ebony Black-Painted Aluminum Optional

Kona Blue Metallic. Available equipment.
Perforated leather-wrapped steering wheel with ST badge.
Front door-sill scuff plates with ST logo.
6-speed manual transmission leather-wrapped shift knob.

¹Ford does not recommend using summer tires when temperatures drop to approximately 7°C or below (depending on tire wear and environmental conditions) or in snow/ice conditions. If the vehicle must be driven in these conditions, Ford recommends using all-season or winter tires.

Exteriors This helpful guide is intended for selecting an exterior colour – not features, options or a trim level.



White Platinum Metallic Tri-coat



Oxford White



Ingot Silver Metallic



Molten Orange Metallic Tri-coat



Ruby Red Metallic Tinted Clearcoat



Electric Spice Metallic



Blue Candy Metallic Tinted Clearcoat



Kona Blue Metallic

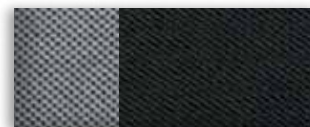


Magnetic Metallic

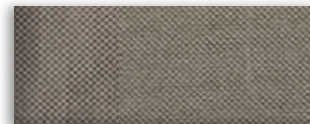


Shadow Black

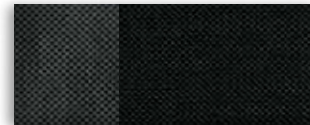
Interiors



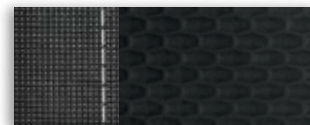
1 Charcoal Black Cloth with Sterling Stone Accents



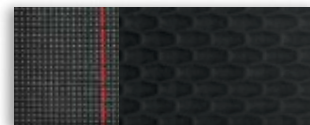
2 Medium Light Stone Cloth



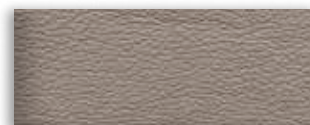
3 Charcoal Black Cloth



4 Charcoal Black Sport Cloth with Silver Stitching



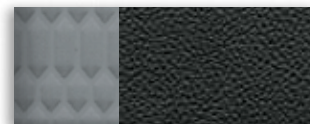
5 Charcoal Black Sport Cloth with Red Stitching



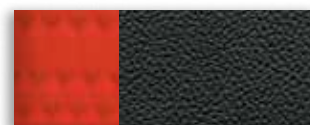
6 Medium Light Stone Leather



7 Charcoal Black Leather



8 Charcoal Black Leather with Smoke Storm Cloth Accents



9 Charcoal Black Leather with Molten Orange Cloth Accents



SE Hatchback in Oxford White accessorized with side window deflectors, lower door stripe graphics, rear roof spoiler, and 16" 8-spoke Black-painted machined aluminum wheels²

Rear spoiler winglets

All-weather floor mats

Remote start systems

Cargo area protector



Exterior

- Custom graphics and trim kits³
- Fiesta ST full vehicle cover
- Fiesta ST over-the-top stripes
- Fog lamp bezels
- Full vehicle covers³
- Hood protector³
- Lower door graphics
- Racks and carriers³
- Rear bumper protector
- Rear spoilers
- Side window deflectors
- Splash guards



Interior

- All-weather and premium carpeted floor mats
- Ash cup/coin holders
- Cargo organizers and protectors
- Door-sill plates
- Fiesta ST all-weather floor mats
- Fiesta ST cargo area protector
- Fiesta ST door-sill plates
- Gear shift knobs^{3,4}
- Interior light kit
- Tablet cradle³



Electronics

- Audio upgrade by KICKER^{®5}
- Keyless entry keypad
- Remote start systems
- Reverse bumper-mounted warning sensor system³
- Vehicle Security System

Wheels

- 16" 8-spoke Black-painted machined aluminum²
- 16" 8-spoke Sparkle Silver²
- 16" polished²
- Fiesta ST 17" Ebony Black-painted aluminum²
- Wheel lock kits

Exteriors	Interiors								
	S	SE				Titanium		ST	
White Platinum Metallic Tri-coat ¹		2	3	4	5	6	7		
Oxford White	1	2	3	4	5	6	7		
Ingot Silver Metallic	1	2	3	4	5	6	7		
Molten Orange Metallic Tri-coat ¹								8	9
Ruby Red Metallic Tinted Clearcoat ¹		2	3	4	5	6	7		
Electric Spice Metallic		2	3	4	5	6	7		
Blue Candy Metallic Tinted Clearcoat ¹		2	3	4	5	6	7		
Kona Blue Metallic		2	3	4	5	6	7	8	9
Magnetic Metallic		2	3	4	5	6	7	8	9
Shadow Black	1	2	3	4	5	6	7	8	9

4,5 SE Sport Appearance Package
Colours are representative only. See your Ford of Canada Dealer for actual paint/trim options. ¹Additional charge.

²Additional components may be required. See your Ford of Canada Dealer for details.
³Ford Licensed Accessory. ⁴Manual transmission only. ⁵Available on Sedan only.